

Rae Corporation

4615 W. Prime Pkwy.

Mchenry, IL 60050 7037 US

Phone: 815.385.3500 • Fax: 815.363.1641

E-Mail: raesales@raemotors.com • Web site: www.raemotors.com

Item # G14, Right Angle Gearmotors - G14 Series

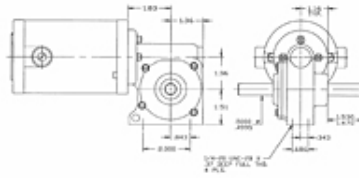
The G14 Series Single Worm Reduction Right Angle Gearbox, when matched with the appropriate RAE motor, is designed for applications requiring high output torque and a dependable, rugged design.

- Continuous Duty
- Rating up to 60 In- Lbs
- Speeds up to 350 rpm
- 12 up to 180 VDC
- 8:1 up to 50:1 Ratios
- 0.500" Maximum Shaft Diameter
- Class "F" Insulation

Gearbox dimensions only. Reference appropriate Series for dimension of motor.

Compatible Motors:

The G14 Series may be combined with the M1500, M1600, M4000, M6000, or Opti 4000 Series motor.



· [FEATURES](#) · [SPECIFICATIONS](#)

FEATURES

- Grease Lubrication
- Ball Bearings (Gearbox)
- Foot Mounting
- High Energy Ceramic Magnets
- Double Shielded Ball Bearings (Motor)
- Dynamically Balanced Armature
- Reversible Design
- 8" Leads
- TENV Design
- Externally Replaceable Brushes
- Auto-Hook Tang Type Commutator
- Value Added Options and Modifications Available
- Some Models Available From Stock

SPECIFICATIONS

Torque Rating	0 up to 60 in·lb
Speeds	0 up to 350 rpm

Voltages	12 up to 180 V
Ratios	8:1 up to 50:1
Max. Shaft Diameter	0.500 in.
Insulation	Class "F"
Lead Length	8 in
