

# Muscle Up



## RAE DC PRODUCTS GROUP

A BLUFFTON MOTOR WORKS COMPANY



## G16 Gearmotors

### Right Angle DC Gear Drives with Higher Torques

Provides up to 95 inch pounds of continuous torque at the output shaft.

- Precision machined worm gear set with an oil-filled gearcase puts muscle in your continuous torque applications.
- Compact design saves space and weight.
- Output speeds from 30 to 350 RPM.
- G16 gearmotors. They are all about driving down your costs.

■ TOP QUALITY, RELIABLE PRODUCTS ■ ON TIME, EVERY TIME ■ MAXIMIZE INVESTMENT

# RAE G16 Right Angle DC Gearmotors with Higher Torques

The oil filled G16 right angle gear train gives you more torque for the buck and brings increased capacity in a compact design. With a continuous duty torque of up to 95 inch pounds, this worm driven gear train can sustain torques higher than most other gear trains of the same size. If your design requires higher capacity in a reduced space, or if your present gearmotor is failing prematurely, test the oil filled G16. It just may be the answer you have been looking for.

## Features

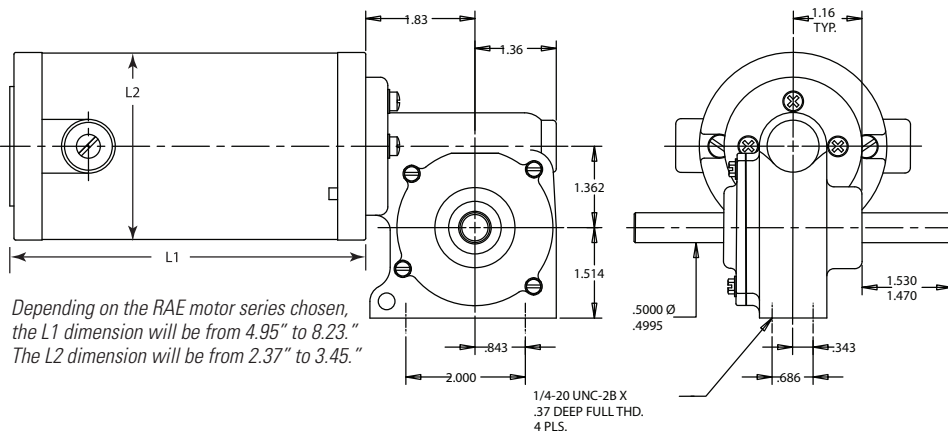
- Grease or Oil Lubrication
- Ball Bearings (Gearbox)
- Foot Mounting
- High Energy Ceramic Magnets
- Double Shielded Ball Bearings (Motor)
- Dynamically Balanced Armature
- Reversible Design
- TENV Enclosure
- Externally Replaceable Brushes
- Auto-Hook Tang Type Commutator
- Value Added Options and Modifications Available

## Specifications

Torque Rating	0 up to 95 in-lb
Speeds	0 up to 350 rpm
Voltages	12 up to 180 V
Ratios	10:1 up to 50:1
Max. Shaft Dia.	0.500 in.
Insulation	Class "F"
Lead Length	8 in

## RAE Compatible Motors

The G16 Series may be combined with the M1600, M4000, M6000 or Opti 4000 Series motors.



## Quality Assurance

A Strong Quality Assurance Commitment – 100% Testing



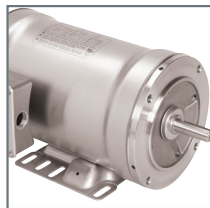
At RAE, quality consciousness is inherent in the production process from start to finish. Our stringent testing process includes:

- AQL sampling of incoming components
- In-process quality checks
- Meeting UL and CSA certification standards
- 100% dynamically balanced and electrically tested armature assemblies
- Hi-pot testing as well as speed and current testing at no load
- Minimum 30-minute product run-in testing

## Bluffton – A Wide Selection of Solutions to Meet Your Needs



AC Motors



Washdown Motors



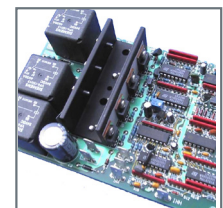
Speed Reducers



DC Gearmotors



AC Gearmotors



DC Controls



# RAE DC PRODUCTS GROUP

A BLUFFTON MOTOR WORKS COMPANY



**RAE DC Products Group**

4615 W. Prime Parkway | McHenry, IL 60050-7037 | 815-385-3500 | [www.raemotors.com](http://www.raemotors.com)

© 2014, Bluffton Motor Works.  
All Rights Reserved.  
RG16-033114

■ TOP QUALITY, RELIABLE PRODUCTS ■ ON TIME, EVERY TIME ■ MAXIMIZE INVESTMENT