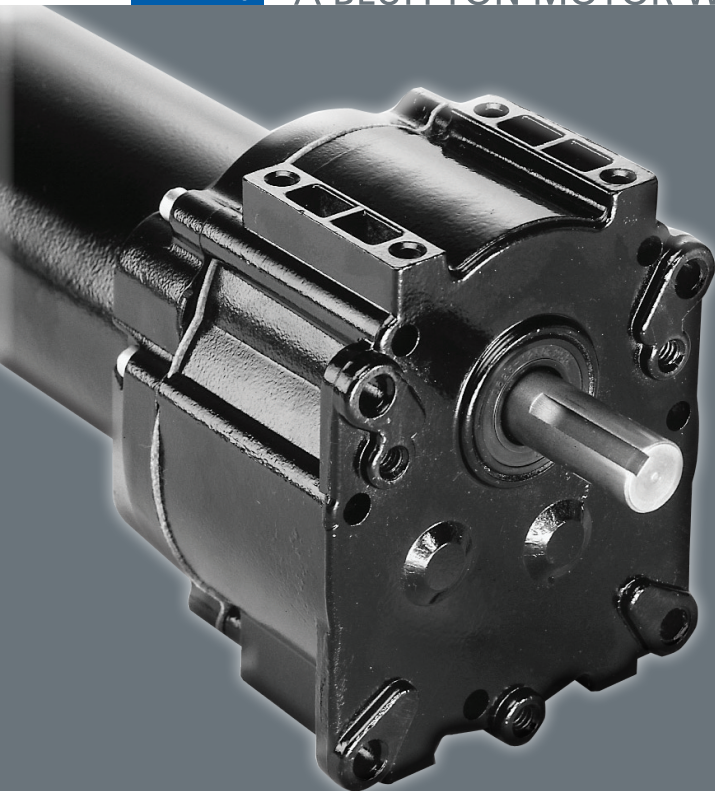




RAE DC PRODUCTS GROUP

A BLUFFTON MOTOR WORKS COMPANY



Compact Performance

Power Dense and Rugged Parallel Shaft DC Gearmotors

GIL200 gearmotors provide up to 300 inch pounds of continuous torque in a small package.

- Available with a wide selection of performance-matched DC motors with NEMA Class F Insulation
- Available with output speeds to 350 RPM
- Ratios from 11.1 to 232:1
- Drop-in replacement for popular units
- GIL200 gearmotors. They are all about driving down your costs

■ TOP QUALITY, RELIABLE PRODUCTS ■ ON TIME, EVERY TIME ■ MAXIMIZE INVESTMENT

RAE GIL200 Parallel Shaft DC Gearmotors. High Torque, Compact and Rugged

GIL200 Series gearmotors, when matched with the appropriate RAE motor, provides high output torque in a compact, rugged die cast parallel shaft gearmotor design.

Features

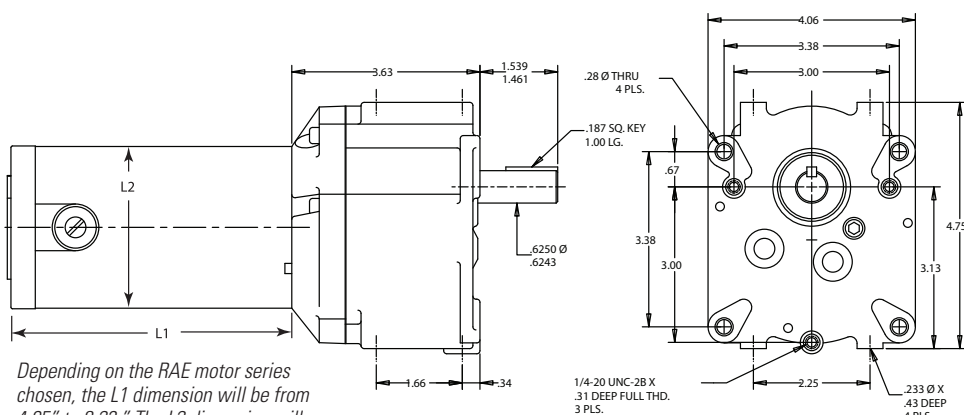
- Gearbox Designed to AGMA Standards
- Oil Lubrication
- Needle Bearings (Gearbox)
- High Energy Ceramic Magnets
- Double Shielded Ball Bearings (Motor)
- Dynamically Balanced Armature
- Reversible Design
- TENV Enclosure
- Externally Replaceable Brushes
- Auto-Hook Tang Type Commutator
- Drop-in Replacement for Popular Units
- Value Added Options and Modifications Available

Specifications

Torque Rating	0 up to 300 in-lb
Speeds	0 up to 350 rpm
Voltages	12 up to 180 V
Ratios	11:1 up to 232:1
Max. Shaft Dia.	0.625 in.
Insulation	Class "F"
Lead Length	8 in
No. of Stages	2 or 3

RAE Compatible Motors

The GIL200 Series may be combined with the M1600, M4000, M6000 or Opti 4000 Series motors.



Depending on the RAE motor series chosen, the L1 dimension will be from 4.95" to 8.23." The L2 dimension will be from 2.37" to 3.45."

Quality Assurance

A Strong Quality Assurance Commitment – 100% Testing



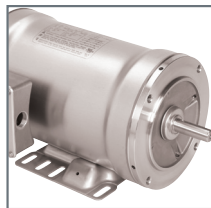
At RAE, quality consciousness is inherent in the production process from start to finish. Our stringent testing process includes:

- AQL sampling of incoming components
- In-process quality checks
- Meeting UL and CSA certification standards
- 100% dynamically balanced and electrically tested armature assemblies
- Hi-pot testing as well as speed and current testing at no load
- Minimum 30-minute product run-in testing

Bluffton – A Wide Selection of Solutions to Meet Your Needs



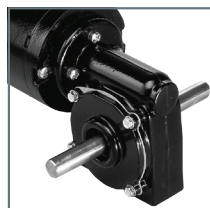
AC Motors



Washdown Motors



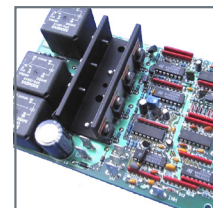
Speed Reducers



DC Gearmotors



AC Gearmotors



DC Controls



RAE DC PRODUCTS GROUP

A BLUFFTON MOTOR WORKS COMPANY



RAE DC Products Group

4615 W. Prime Parkway | McHenry, IL 60050-7037 | 815-385-3500 | www.raemotors.com

© 2014, Bluffton Motor Works.
All Rights Reserved.
RGIL200-033114

■ TOP QUALITY, RELIABLE PRODUCTS ■ ON TIME, EVERY TIME ■ MAXIMIZE INVESTMENT