

Rae Corporation

4615 W. Prime Pkwy.

Mchenry, IL 60050 7037 US

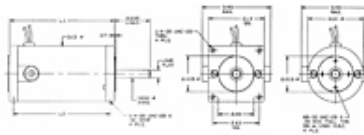
Phone: 815.385.3500 • Fax: 815.363.1641

E-Mail: raesales@raemotors.com • Web site:www.raemotors.com

Item # M4400, Permanent Magnet DC Motors - M4000 Series

The M4000 Series Permanent Magnet Motor offers the design engineer a rugged product along with a great deal of design flexibility.

- 1/30 hp up to 1/4 hp
- Speeds up to 3500 rpm
- 12 up to 180 VDC
- 0.500" Maximum Shaft Diameter
- 2.015" Standard Pilot Diameter
- Class "F" Insulation



· [FEATURES](#) · [SPECIFICATIONS](#)

FEATURES

- High Energy Ceramic Magnets
- Double Shielded Ball Bearings
- Dynamically Balanced Armature
- Reversible Design
- 8" Leads
- TENV Design
- Round or Square End Bells
- Externally Replaceable Brushes
- Auto-Hook Tang Type Commutator
- Value added options and modifications available

SPECIFICATIONS

Voltage Range	12 up to 180 V
Speed	0 up to 3500 rpm
Continuous Torque DC Rating ¹	110.0 in-oz
Continuous Torque SCR Rating	56.0 in-oz
Weight	9.00 lbs
HP Rating	0 up to 1/4

Max. Shaft Diameter	0.500 in.
Standard Pilot Diameter	2.015 in.
L1 M1500	7.915/7.860 in.
L2 M1503	7.457/7.382 in.
Insulation	Class "F"
Lead Length	8 in
End Bells	Round or Square

1 DC rating based on 1.00 formfactor; SCR rating based on 1.4 formfactor, 25°C ambient
