

**Rae Corporation**

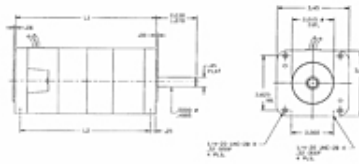
4615 W. Prime Pkwy.

Mchenry, IL 60050 7037 US

**Phone:** 815.385.3500 • **Fax:** 815.363.1641**E-Mail:** raesales@raemotors.com • **Web site:** www.raemotors.com**Item # OPTI 4026, Permanent Magnet DC Motors - OPTI 4000 Series**

The OPTI 4000 provides the ultimate combination of design flexibility and performance. The unique rectangular shaped metal yoke yields high output torques in a compact size.

- 1/17 hp up to 1/3 hp
- Speeds up to 3500 rpm
- 12 up to 130 VDC
- 0.500" Maximum Shaft Diameter
- 2.015" Standard Pilot Diameter
- Class "F" Insulation



· [FEATURES](#) · [SPECIFICATIONS](#)

**FEATURES**

- High Energy Ceramic Magnets
- Double Shielded Ball Bearings
- Dynamically Balanced Armature
- Reversible Design
- 8" Leads
- TENV Design
- Externally Replaceable Brushes
- High Efficiency Rectangular Metal Shell
- Auto-Hook Tang Type Commutator
- Value added options and modifications available

**SPECIFICATIONS**

Voltage Range	12 up to 130 V
Speed	0 up to 3500 rpm
Continuous Torque DC Rating <sup>1</sup>	120.0 in·oz
Continuous Torque SCR Rating	61.0 in·oz
Weight	10.30 lbs

HP Rating	0 up to 1/4
Max. Shaft Diameter	0.500 in.
Standard Pilot Diameter	2.015 in.
L1 M1500	6.850/6.800 in.
L2 M1503	6.350/6.300 in.
Insulation	Class "F"
Lead Length	8 in

1 DC rating based on 1.00 formfactor; SCR rating based on 1.4 formfactor, 25°C ambient

---