

Rae Corporation

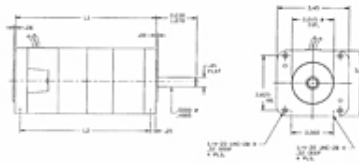
4615 W. Prime Pkwy.

Mchenry, IL 60050 7037 US

Phone: 815.385.3500 • **Fax:** 815.363.1641**E-Mail:** raesales@raemotors.com • **Web site:** www.raemotors.com**Item # OPTI 4040, Permanent Magnet DC Motors - OPTI 4000 Series**

The OPTI 4000 provides the ultimate combination of design flexibility and performance. The unique rectangular shaped metal yoke yields high output torques in a compact size.

- 1/17 hp up to 1/3 hp
- Speeds up to 3500 rpm
- 12 up to 130 VDC
- 0.500" Maximum Shaft Diameter
- 2.015" Standard Pilot Diameter
- Class "F" Insulation



· [FEATURES](#) · [SPECIFICATIONS](#)

FEATURES

- High Energy Ceramic Magnets
- Double Shielded Ball Bearings
- Dynamically Balanced Armature
- Reversible Design
- 8" Leads
- TENV Design
- Externally Replaceable Brushes
- High Efficiency Rectangular Metal Shell
- Auto-Hook Tang Type Commutator
- Value added options and modifications available

SPECIFICATIONS

| | |
|--|------------------|
| Voltage Range | 12 up to 130 V |
| Speed | 0 up to 3500 rpm |
| Continuous Torque DC Rating ¹ | 165.0 in·oz |
| Continuous Torque SCR Rating | 84.0 in·oz |
| Weight | 12.50 lbs |

| | |
|-------------------------|-----------------|
| HP Rating | 0 up to 1/3 |
| Max. Shaft Diameter | 0.500 in. |
| Standard Pilot Diameter | 2.015 in. |
| L1 M1500 | 8.230/8.170 in. |
| L2 M1503 | 7.730/7.670 in. |
| Insulation | Class "F" |
| Lead Length | 8 in |

1 DC rating based on 1.00 formfactor; SCR rating based on 1.4 formfactor, 25°C ambient
